

Maldives Land and Survey Authority,

MINISTRY OF HOUSING AND INFRASTRUCTURE

Ameenee Magu, Maafannu, Male', 20392, Maldives.

Office (PABX): +(960) 3004300, Fax: +(960) 3004254

Email: survey@mhe.gov.mv

Web: www.surveyofmaldives.gov.mv, www.mhe.gov.mv



CONTROL POINT DETAILS		Station Number	PSM 5355
Coordinate Information			
Geodetic		Grid	
WGS 84		UTM Zone 43	
Lat:	2°40'46.93"N	E:	269922.250m
Long:	72°55'49.99"E	N:	296384.260m
Ellp Height:		Orth Height:	1.22m
Island Name: Dh. Embudhufushi - Olhuveli		Date:	21st December 2012

Monument description & method of survey:

- o Type A monument
- o The coordinates (E, N) is Geo referenced using Leica System 500 GPS
- o Level was determined using tide data provided by MAT.

General site condition & access:

- o PSM5355 was established in the vegetation line of the island.
- o PSM5355 is located on DH.Olhuveli Embudhu south of the bridge
- o PSM5355 is located in an area which is easy to access and locate

Owner: O Plus E Holdings Pvt. Ltd.



Bottom



North



East



Up



South



West

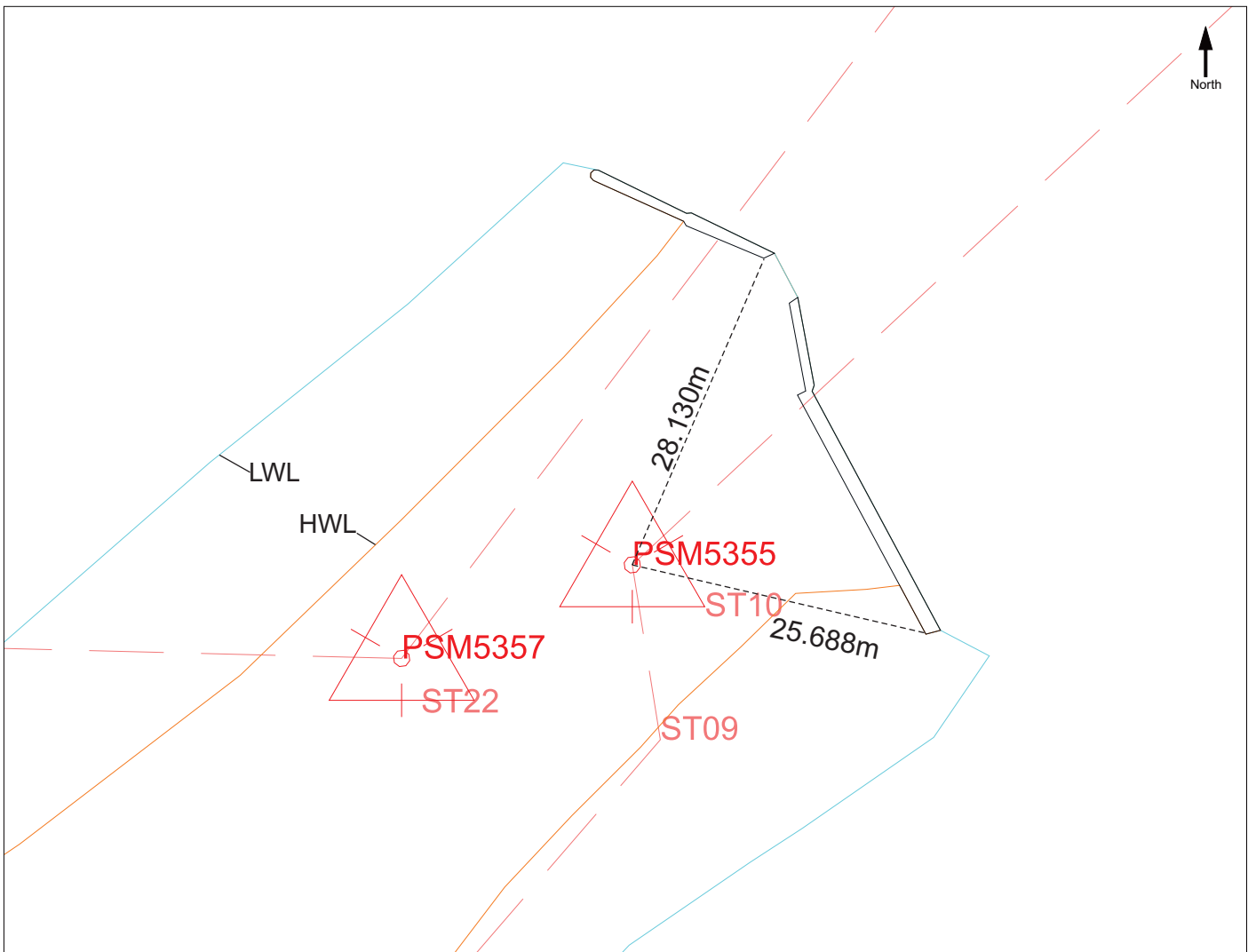
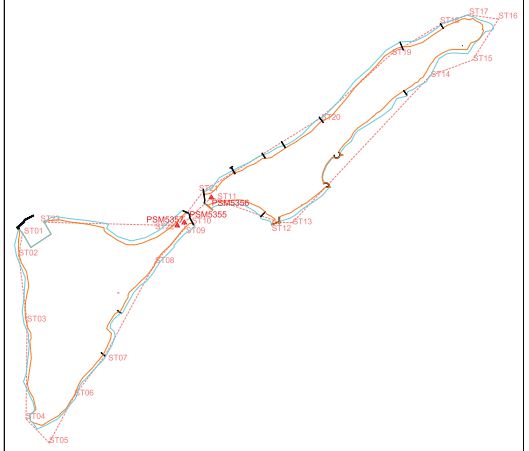
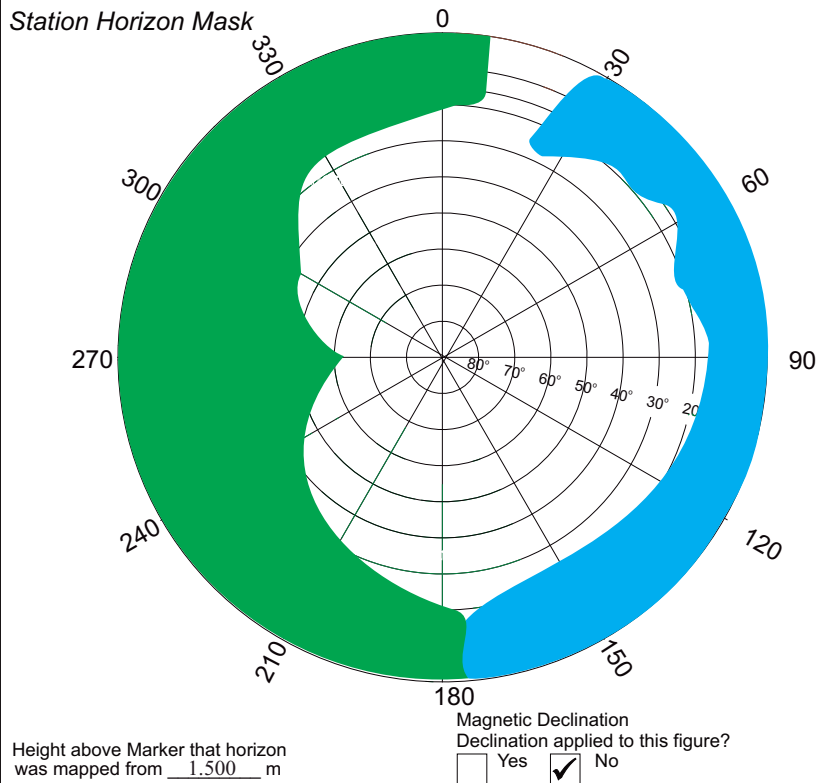
SITE INFORMATION

Station Number

PSM 5355

Station Horizon Mask

Locality



Sketched by: Abulho

Scale: Not to scale

Date: December 2012

Maldives Land and Survey Authority,

MINISTRY OF HOUSING AND INFRASTRUCTURE

Ameenee Magu, Maafannu, Male', 20392, Maldives.

Office (PABX): +(960) 3004300, Fax: +(960) 3004254

Email: survey@mhe.gov.mv

Web: www.surveyofmaldives.gov.mv, www.mhe.gov.mv



CONTROL POINT DETAILS		Station Number	PSM 5356
Coordinate Information			
Geodetic		Grid	
WGS 84		UTM Zone 43	
Lat:		E:	269997.196m
Long:		N:	296453.989m
Ellp Height:		Orth Height:	1.54m
Island Name: Dh. Embudhufushi - Olhuveli		Date: 21st December 2012	

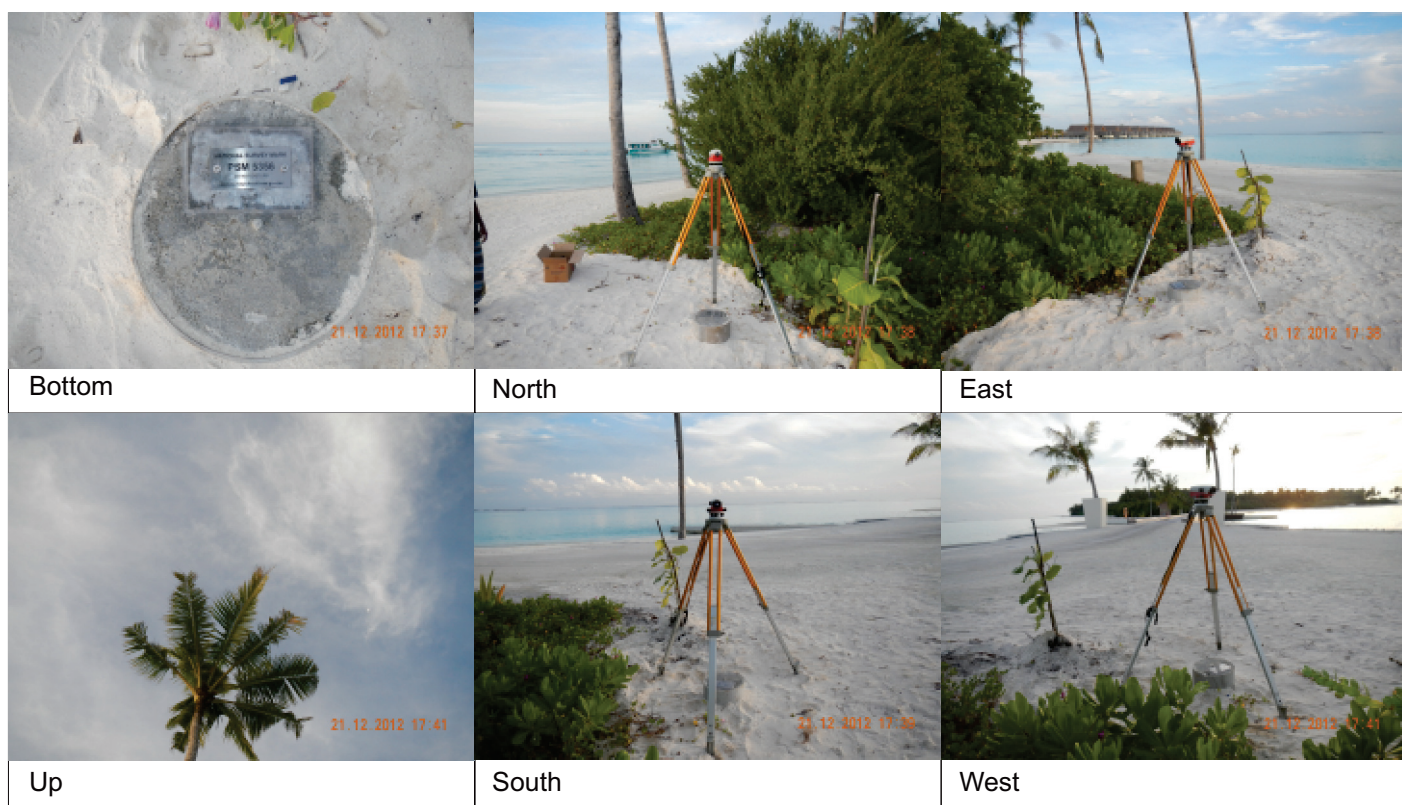
Monument description & method of survey:

- o Type A monument
- o The coordinates (E, N) was derived from the traverse by using PSM 5355 as a base reference.
- o A level double run was recorded using PSM 5355 as the base, vertical control levels of PSM 5356 was determined from the level circuit

General site condition & access:

- o PSM 5356 was established in the vegetation line of the island
- o PSM 5356 is located north of the bridge
- o PSM 5356 is located in an area which is easy to access and locate

Owner: O Plus E Holdings Pvt. Ltd.



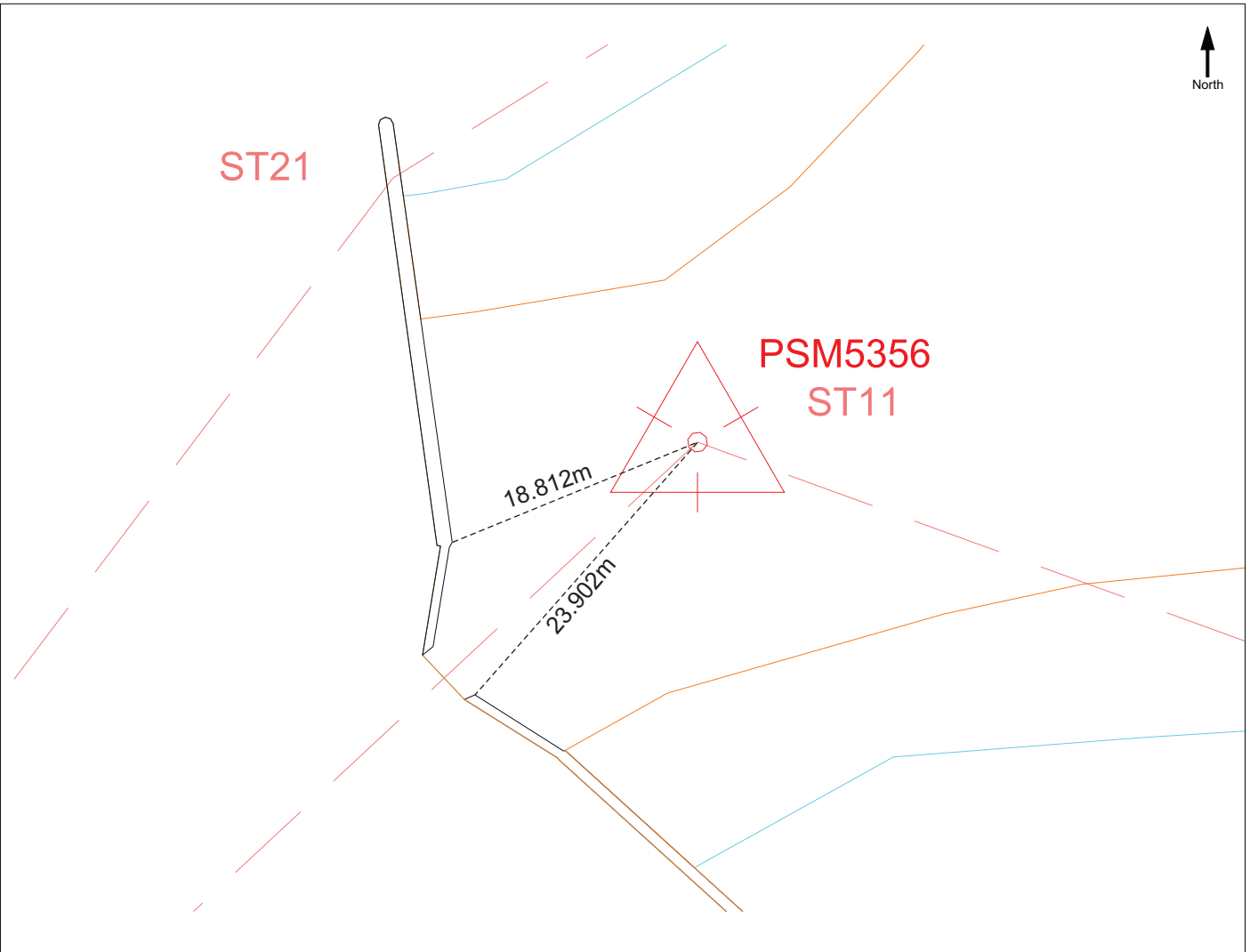
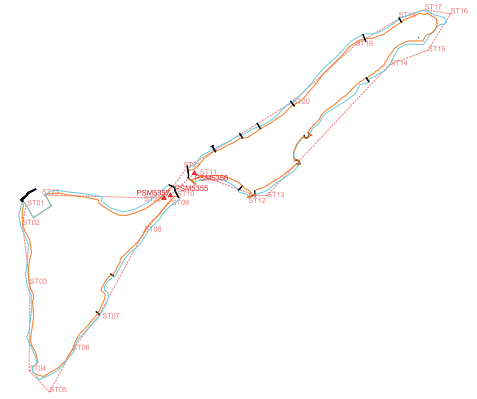
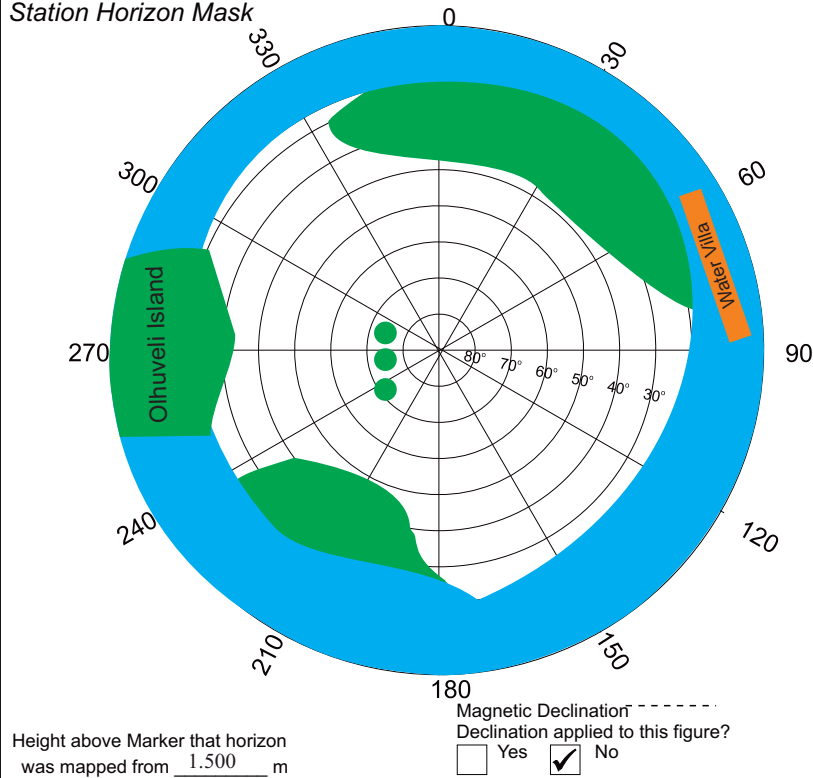
SITE INFORMATION

Station Number

PSM 5356

Station Horizon Mask

Locality



Sketched by: Abulho

Scale: Not to scale

Date: December. 2012

Maldives Land and Survey Authority,

MINISTRY OF HOUSING AND INFRASTRUCTURE

Ameenee Magu, Maafannu, Male', 20392, Maldives.

Office (PABX): +(960) 3004300, Fax: +(960) 3004254

Email: survey@mhe.gov.mv

Web: www.surveyofmaldives.gov.mv, www.mhe.gov.mv



CONTROL POINT DETAILS		Station Number	PSM 5357
Coordinate Information			
Geodetic		Grid	
WGS 84		UTM Zone 43	
Lat:		E:	269902.612m
Long:		N:	296376.296m
Ellp Height:		Orth Height:	1.35m
Island Name: Dh. Embudhufushi - Olhuveli		Date:	21st December 2012

Monument description & method of survey:

- o Type A monument
- o The coordinates (E, N) was derived from the traverse by using PSM 5355 as a base reference.
- o A level double run was recorded using PSM 5355 as the base, vertical control levels of PSM 5357 was determined from the level circuit.

General site condition & access:

- o PSM 5357 was established in the vegetation line of the island.
- o PSM 5357 is located south west of the bridge
- o PSM 5357 is located in an area which is easy to access and locate.

Owner: O Plus E Holdings Pvt. Ltd.



SITE INFORMATION

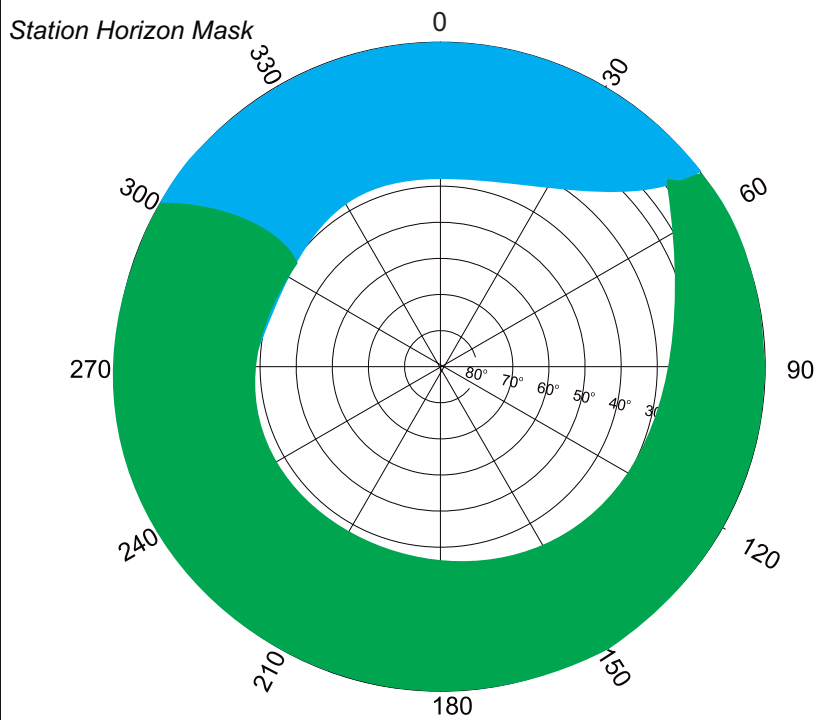
Station Number

PSM

5357

Station Horizon Mask

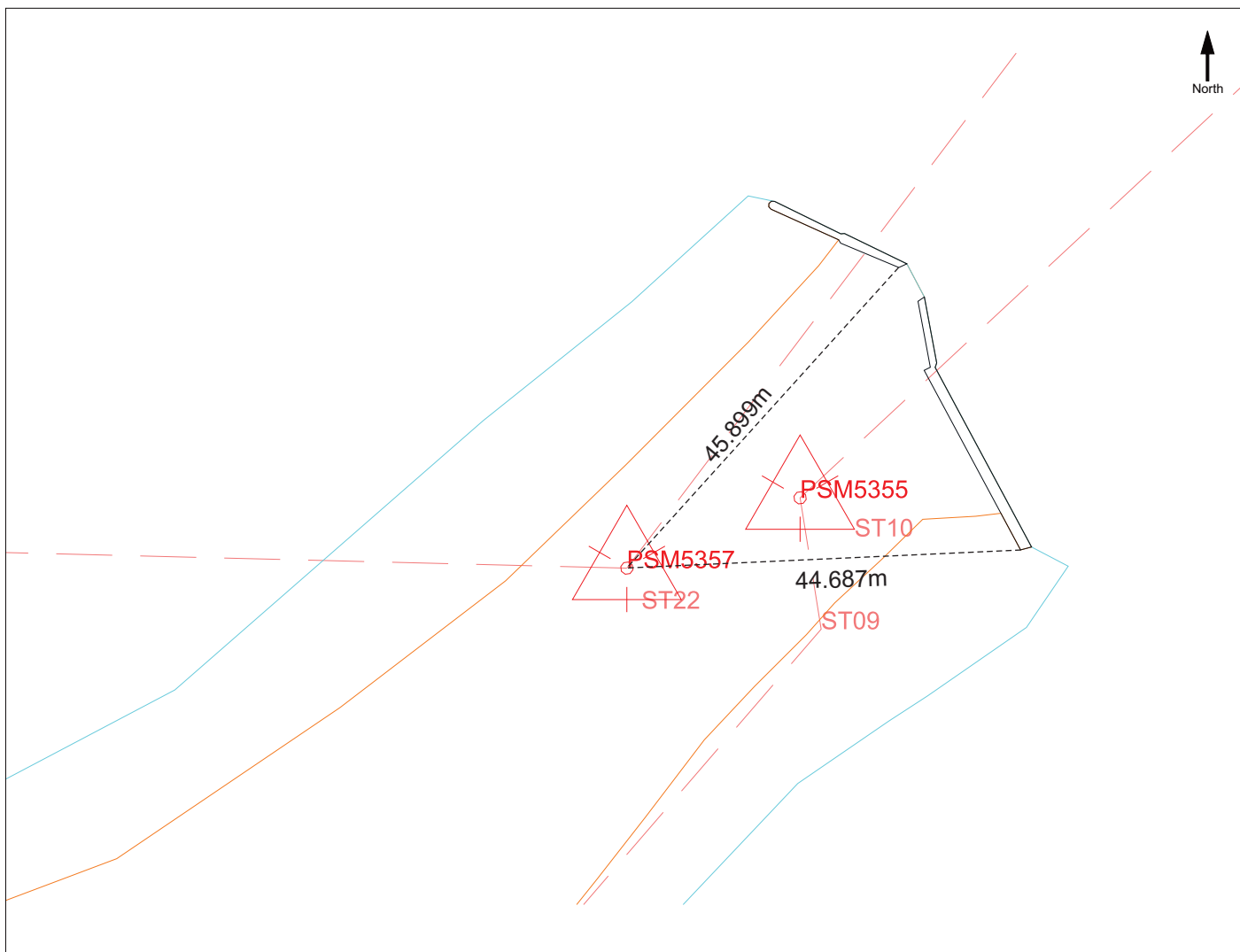
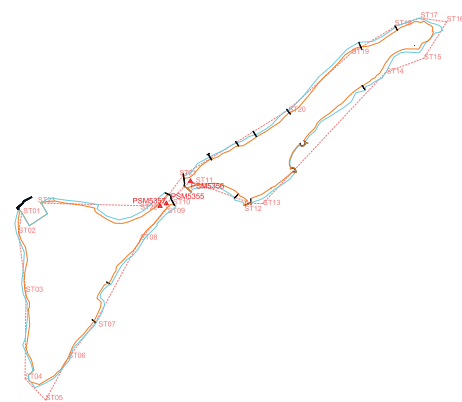
Locality



Height above Marker that horizon was mapped from 1.500 m

Magnetic Declination
Declination applied to this figure?

☐ Yes ☒ No



Sketched by: Abulho

Scale: Not to scale

Date: December. 2012